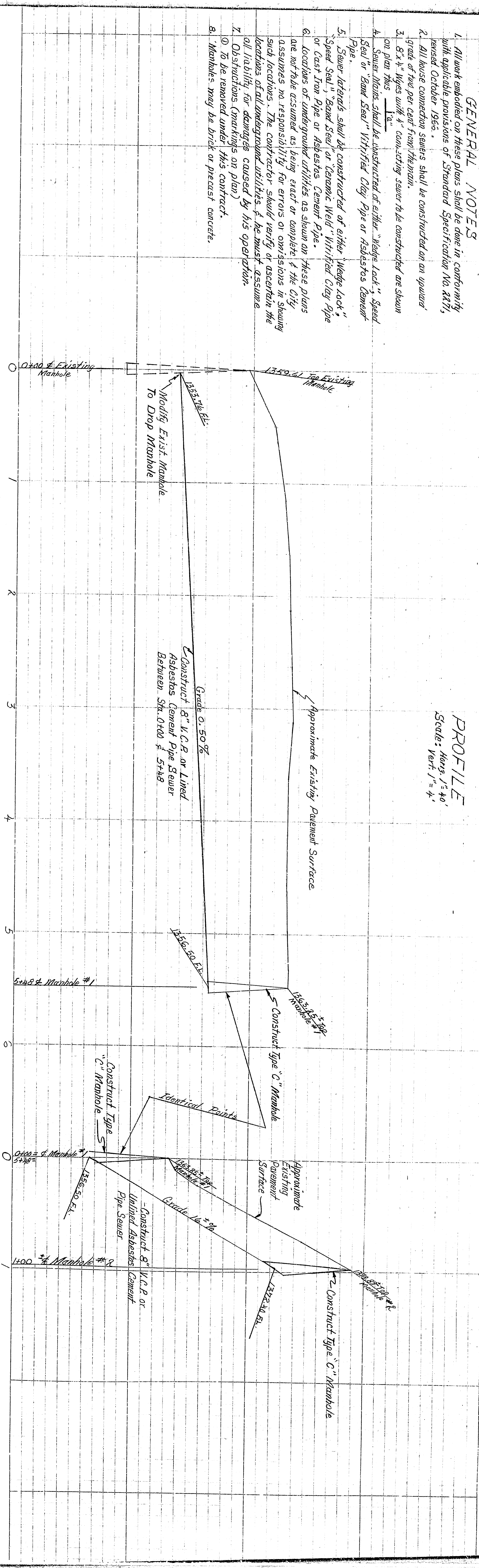


**GENERAL NOTES**

1. All work embodied on these plans shall be done in conformity with applicable provisions of Standard Specifications No. 811, revised October 1963.
2. All house connection sewers shall be constructed on an upward grade of four per cent from the main.
3. 8" x 4" Wyes with 4" connecting sewer to be constructed as shown on plan this 1/2".
4. Sewer drains shall be constructed of either "Wedge Lock", Speed Seal or "Band Seal" Vitrified Clay Pipe or Asbestos Cement Pipe.
5. Sewer laterals shall be constructed of either "Wedge Lock", Speed Seal, "Band Seal" or Ceramic Weld Vitrified Clay Pipe or Cast Iron Pipe or Asbestos Cement Pipe.
6. Locations of underground utilities as shown on these plans are not to be assumed as being exact or complete, if the City assumes no responsibility for errors or omissions in showing such locations. The contractor shall verify or ascertain the locations of all underground utilities & he must assume all liability for damages caused by his operation.
7. Obstructions (markings on plan) to be removed under this contract.
8. Manholes may be brick or precast concrete.

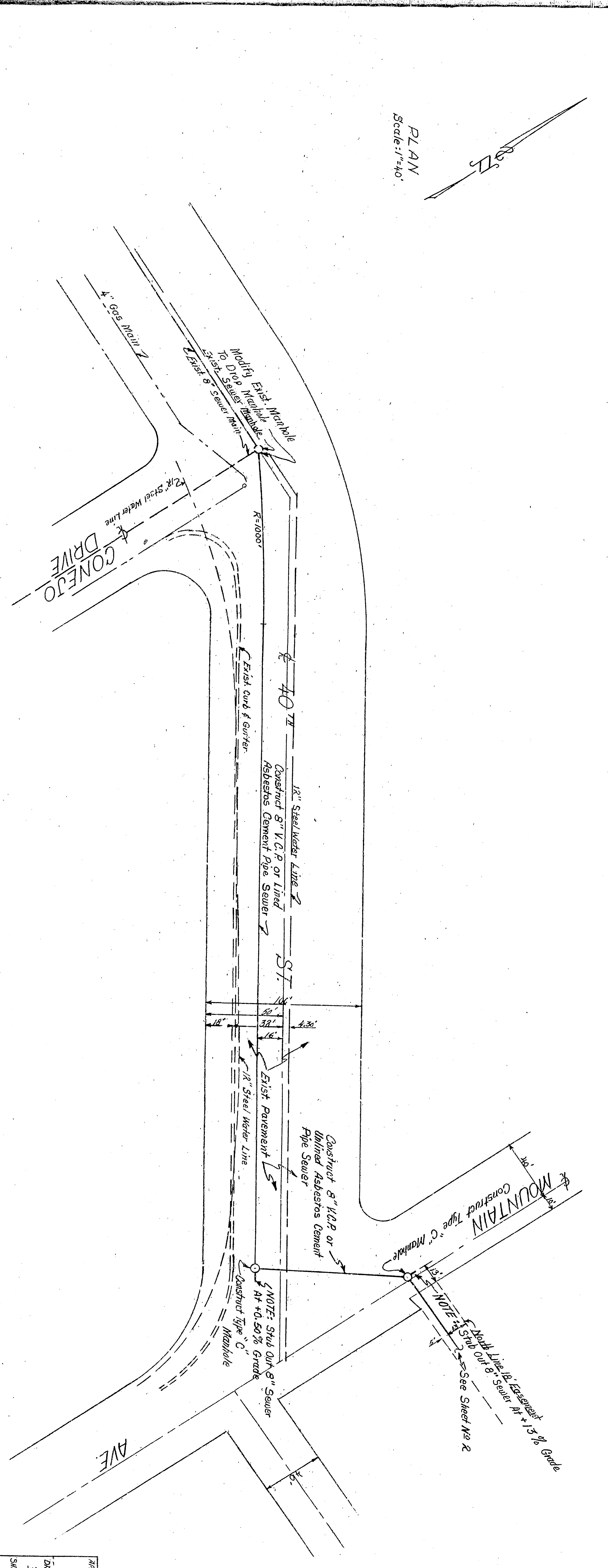
**PROFILE**

Scale: Horiz. 1" = 40'  
Vert. 1" = 4'



**PLAN**

Scale: 1" = 40'



APPROVED	DATE	BY
<i>[Signature]</i>	10-14-63	J. B. BERNARDINO
REGISTERED CIVIL ENGINEER NO. 12683		
DRAWING NO. DRAWN BY	DATE	BY
3545	October 27, 1963	J. B. BERNARDINO
SHEET 1 OF 2	DESIGN	RECOMMENDED
DEPARTMENT OF ENGINEERING CITY OF SAN BERNARDINO SEWER MAIN FROM CONESO DR & 40TH ST TO BONITA VISTA DR		